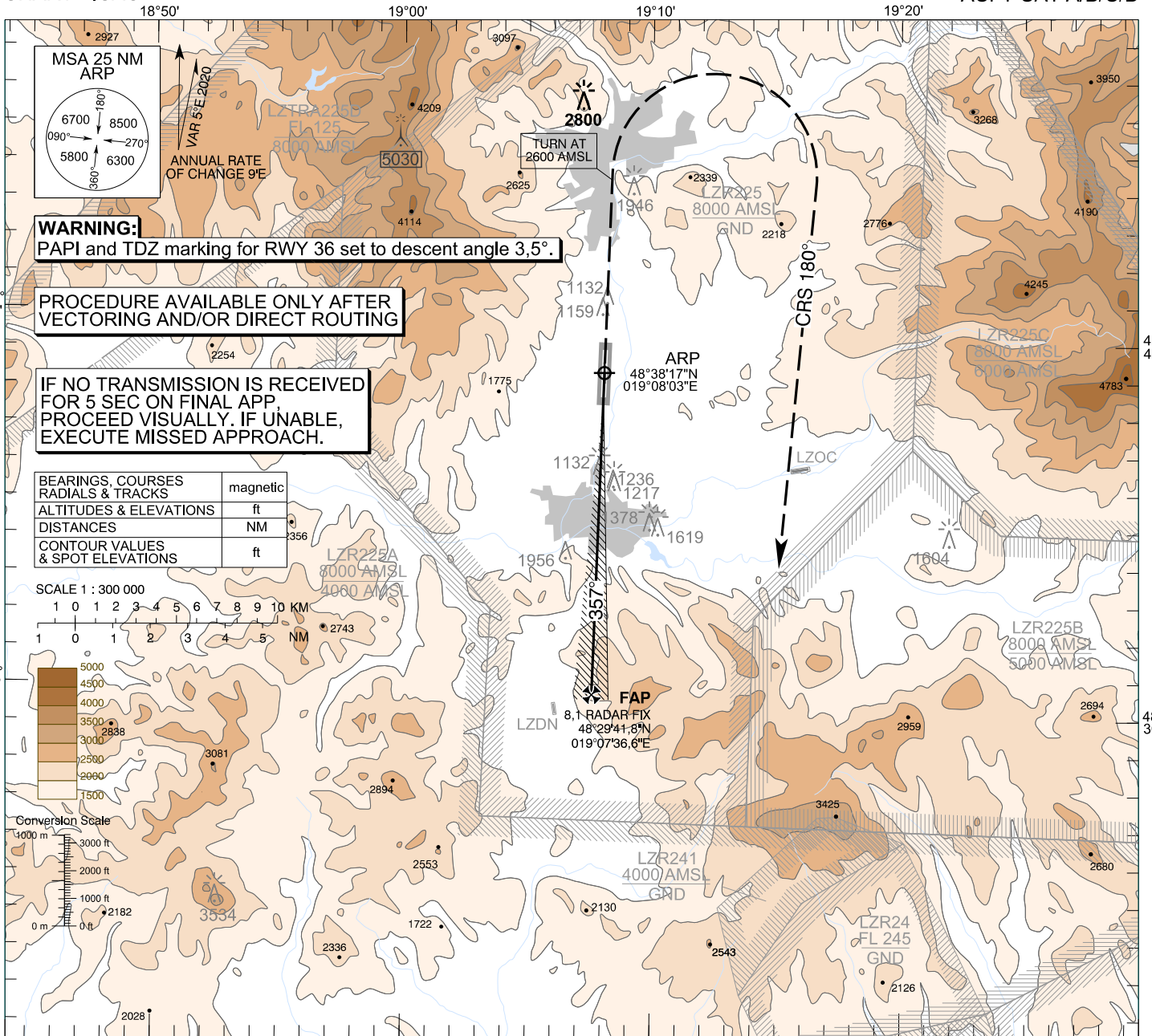


**INSTRUMENT
APPROACH
CHART - ICAO**

TRANSITION ALTITUDE
10 000 ft
AD ELEV 1044,0 - 38 hPa
THR RWY 36 ELEV 1014,5 - 37 hPa

SLIAČ APPROACH/RADAR 119,155
SLIAČ TOWER 122,905
SLIAČ PRECISION 343,475

**SLIAČ (LZSL)
PAR RWY 36
ACFT CAT A/B/C/D**



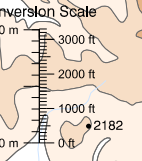
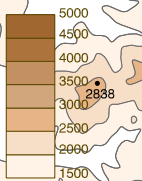
WARNING:
PAPI and TDZ marking for RWY 36 set to descent angle 3,5°.

PROCEDURE AVAILABLE ONLY AFTER
VECTERING AND/OR DIRECT ROUTING

IF NO TRANSMISSION IS RECEIVED
FOR 5 SEC ON FINAL APP,
PROCEED VISUALLY. IF UNABLE,
EXECUTE MISSED APPROACH.

BEARINGS, COURSES RADIALS & TRACKS	magnetic
ALTITUDES & ELEVATIONS	ft
DISTANCES	NM
CONTOUR VALUES & SPOT ELEVATIONS	ft

SCALE 1 : 300 000



8,1 RADAR FIX
FAP

ARP

MISSED APPROACH

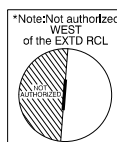
Climb STRAIGHT AHEAD,
at 2600 AMSL turn RIGHT
to CRS 180°, climbing
to 5500 AMSL, then as directed
by RADAR CONTROLLER.
MAX IAS 210 kt until
established on CRS 180°.
No turn before ARP.



THR RWY 36 ELEV 1014,5 - 37 hPa
NM to/from THR RWY 36

TCH 51,5

OCA (OCH)	ASC	A	B	C	D
Straight - in Approach	2,5% 5,0%	ft 1984 (970)	ft 2001 (987)	ft 2014 (1000)	ft 2030 (1016)
		ft 1220 (206)	ft 1237 (223)	ft 1250 (236)	ft 1266 (252)
Circling (* see Note)		ft 2410 (1366)	ft 2810 (1766)	ft 2840 (1796)	



RADAR FIX	NM	8,0	7,0	6,0	5,0	4,0	3,0	2,0	1,0
ALTITUDES	ft	4479	4041	3604	3170	2737	2306	1877	1449

Ground speed	kt	70	90	100	120	140	160	180
Rate of descent (7,0%)	ft/min	496	637	708	850	991	1133	1275

CHANGES: lateral limits of LZR241